

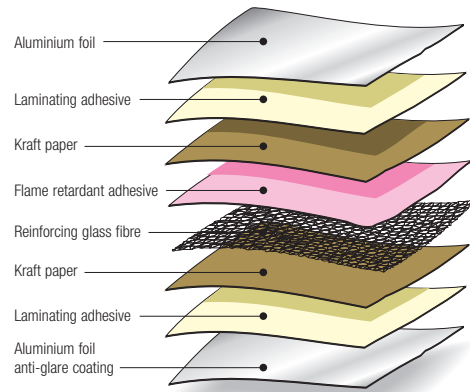
# SISALATION™ 430/433

## Medium Duty Foil Laminate



### PRODUCT DESCRIPTION

Insulation Solutions™ *Sisalation* 430/433 are manufactured from two outer layers of aluminium foil and two layers of high density kraft paper. These layers are bonded together using flame retardant adhesive and reinforced with glass fibres arranged in a 25mm x 14mm grid. One aluminium face of *Sisalation* 433 is blue to reduce any problems with reflected glare during installation.

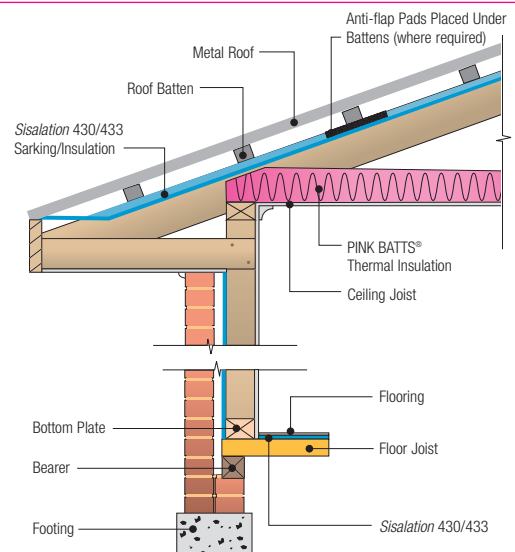


### PRODUCT APPLICATION

*Sisalation* 430/433 are suited to applications where good tensile strength and durability are required. *Sisalation* 433 is therefore ideally suited as sarking and insulation under roofs, in walls behind cladding or under timber floors, for residential and commercial buildings.

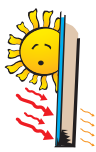
*Sisalation* 430 is suitable for use in conjunction with FBS-1 Bio Soluble Glass Wool™ as a vapour barrier for air conditioning ducts, pipes and vessels.

*Sisalation* 430 may be perforated for use in conjunction with FBS-1 Glass Wool where acoustic performance criteria are specified.



### PRODUCT FUNCTION

#### INSULATION



When installed in conjunction with an airspace, *Sisalation* 433 provides insulation to tiled or metal roofs or brick veneer walls. (see "Thermal Performance" section).

#### ENERGY EFFICIENCY



As insulation, *Sisalation* 433 will reduce summer heat gain and winter heat loss in a building. Importantly this will enhance energy efficiency and help reduce greenhouse gas emissions.

*Sisalation* 433 has a high light reflectivity. When installed as an exposed internal roof lining, the reflectivity of the ceiling is increased by up to 40%. This reduces artificial lighting loads and further enhances energy efficiency.

#### FIRE PERFORMANCE



*Sisalation* 430/433 is flame retardant and is suitable for use in buildings in bushfire prone areas to help lessen fire hazard by preventing the ingress of sparks into the roof space.

#### PROTECTION



As sarking under tiled roofs, *Sisalation* 433 provides an effective barrier or second skin against the ingress of wind driven rain, dust and debris entering the roof space, particularly if the roof tiles become cracked or damaged.

Under metal roofs and in wall systems, *Sisalation* 433 will reduce the potential for condensation to occur, preventing water damage to the building.

#### VAPOUR BARRIER



*Sisalation* 430/433 will provide an effective vapour barrier when overlapped and sealed with *Insulation Solutions* Vapastop™ 883 self adhesive aluminium foil tape.



THE ORIGINAL FOIL

# SISALATION™ 430/433

## Medium Duty Foil Laminate



### SPECIFICATION

*Sisalation* 433 satisfies the BCA requirements for sarking type materials. It complies with the requirements of AS/NZS4200.1, for “Pliable Building Membranes”, which is a deemed-to-satisfy manual

recognised by the BCA Part 3.5 Roof and Wall Cladding. It has a low flammability index in accordance with AS1530.2 which satisfies the BCA Part 3.7.1 Fire Hazard Properties.

### INSTALLATION

When used as sarking, *Sisalation* 433 should be installed in accordance with AS/NZS4200.2 for the “Installation Requirements for Pliable Building Membranes”. *Sisalation* in roofs should be installed with a sag of 40mm between rafters. To provide optimum insulation

values, a minimum air space of 20mm is required adjacent to the reflective foil face. In high wind areas, it may be necessary to install anti-flap pads.

### PHYSICAL PROPERTIES

*Sisalation* 430/433 exhibit the following properties as defined by AS/NZS4200.1 for “Pliable Building Membranes”.

#### CLASSIFICATIONS:

Duty	Medium	Tensile Strength Machine Direction (kN/m)	Min 9.5
Vapour Barrier	High	Tensile Strength Lateral Direction (kN/m)	Min 6.0
Emittance	Reflective	Edge Tear Resistance Machine Direction (N)	Min 65
Water Barrier	High	Edge Tear Resistance Lateral Direction (N)	Min 65
Flammability Index	Low	Water Vapour Transmission Rate (ng/Ns)	Max 2
		Emittance of Reflective Face	Max 0.05

### CHEMICAL PROPERTIES

#### DURABILITY

When installing *Sisalation* 433, the cladding or flooring should be installed without delay,

#### RESISTANCE TO ALKALIS

Aluminium foil is susceptible to alkali attack, so *Sisalation* 430/433 should not be used in contact with wet concrete or mortar.

### HEALTH & SAFETY

There are no known health or safety risks associated with this product for applications described in this data sheet. For additional

information, or a Material Safety Data Sheet, please contact your nearest *Insulation Solutions* office.

### STANDARD ROLL SIZES

#### *Sisalation* 433

Roll Width	1500mm	1350mm	1350mm
Roll Length	30m	60m	20m
Roll Area	45m <sup>2</sup>	81m <sup>2</sup>	27m <sup>2</sup>

#### *Sisalation* 430

Roll Width	1500mm	1350mm	1200mm
Roll Length	30m	60m	60m
Roll Area	45m <sup>2</sup>	81m <sup>2</sup>	72m <sup>2</sup>

### SUSTAINABILITY

Sustainability...measures that satisfy the needs of people today while enhancing the quality of life for future generations. The demands on non-renewable resources for the production of energy are not sustainable

without compromising the environment. Insulation, correctly specified and installed, is one of the most beneficial products in improving energy efficiency and reducing greenhouse gas emissions.

# SISALATION™ 430/433

## Medium Duty Foil Laminate



### THERMAL PERFORMANCE

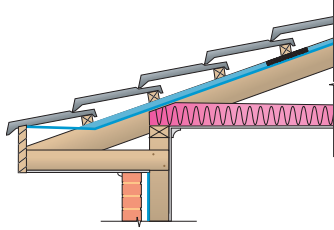
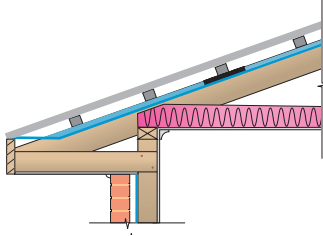
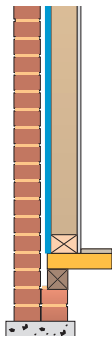
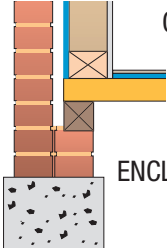

Sisalation 433 complies with the requirements of AS/NZS 4859.1.

The declared Total R-values have been calculated at mean temperatures of 27°C for Summer and 15°C for Winter with a temperature difference of 6±0.5K. The contribution of this

product to Total R-value depends on installation and environmental conditions which include the effect of dust.

Emittance of reflective foil surface ≤0.05, and antiglare ≤0.3

Sisalation in roofs should be installed with a sag of 40mm between rafters.

APPLICATION	SUMMER	WINTER
<p>TILED ROOF - Pitched / Flat Ceiling (Sisalation 433 under battens)</p> 	TOTAL <b>R2.1</b>	TOTAL <b>R0.9</b>
<p>METAL ROOF - Pitched / Flat Ceiling (Sisalation 433 under battens)</p> 	TOTAL <b>R2.1</b>	TOTAL <b>R0.9</b>
<p>BRICK VENEER WALL - (Sisalation 433 on outside of studwork)</p> 	TOTAL <b>R1.3</b>	TOTAL <b>R1.3</b>
<p>FLOOR - Timber Suspended</p>  <p>OPEN SUB-FLOOR</p>	TOTAL <b>R0.6</b>	TOTAL <b>R1.0</b>
<p>ENCLOSED SUB-FLOOR</p> 	TOTAL <b>R0.8</b>	TOTAL <b>R1.7</b>

# SISALATION™ 430/433

## Medium Duty Foil Laminate



### RECOMMENDED INSTALLATION

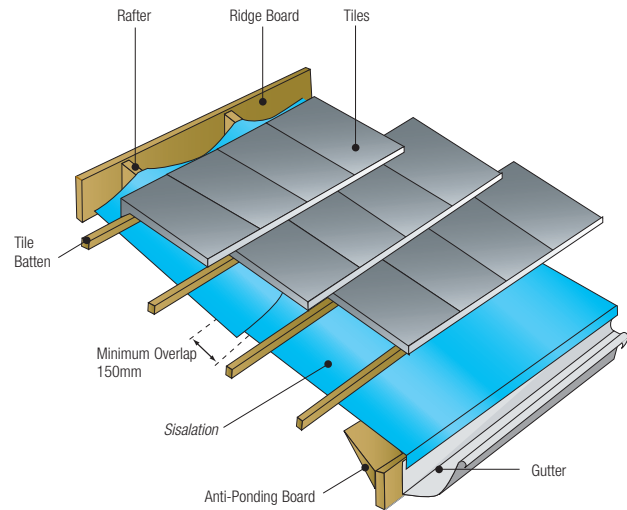
When used as sarking, *Sisalation* should be installed in accordance with AS/NZS4200.2 for the "Installation Requirements for Pliable Building Membranes". *Sisalation* should be installed using the

following method: To provide optimum insulation values, a minimum air space of 20mm is required adjacent to the reflective foil face. In high wind areas, it may be necessary to install anti-flap pads.

#### 1. ROOF INSTALLATION

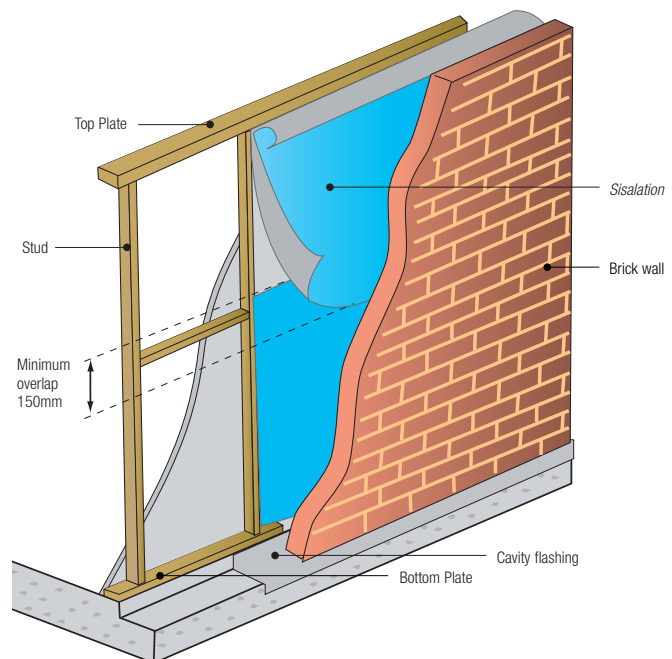
An anti-ponding board should be fixed to the fascia board to prevent water collecting on the lowest sheet of *Sisalation*.

Lay the *Sisalation* across the rafters, antiglare side upward, and temporarily hold in place with tile battens. Start at the eaves with the edge of the sheeting folded under and turned down into the gutter. Lay subsequent sheets, working towards the ridge, overlapping existing sheets by 150mm. Dish the foil 30mm between each rafter. Leave a gap of 50mm at the ridge. In this application *Sisalation* acts as a sarking and a thermal insulation.



#### 2. WALL INSTALLATION

Align the lower edge of the *Sisalation* sheet with the bottom of the bottom plate with antiglare coating facing outwards. Hammer the fixing discs through the sheet to each stud every 300mm up stud. position the top sheet to overlap the bottom sheet by at least 150mm and to seal across the top of the wall cavity. Fix the top sheet at the top plate, the middle of the sheet and the middle of the overlap.



FREECALL 1800 626 624

WEBSITE: [www.eurekainsulation.com.au](http://www.eurekainsulation.com.au)

